

# SHIELDED SMD POWER INDUCTORS / SSR TYPE

## FEATURES

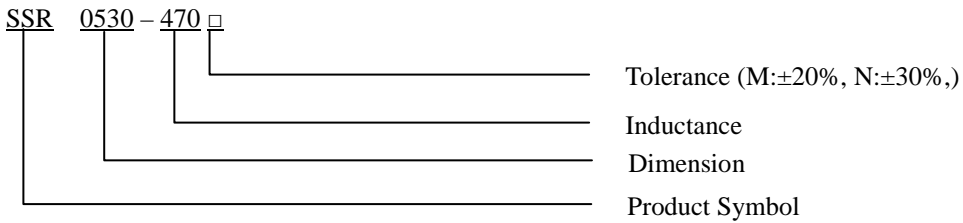
- ◆ Magnetically shielded.
- ◆ Low DC resistance.
- ◆ Suitable for large currents.
- ◆ Various high power inductors are superior to be high saturation for surface mounting



## APPLICATIONS

- ◆ Power supply for OA equipment.
- ◆ Portable communication equipment.
- ◆ LCD televisions, Notebook.
- ◆ DC to DC converters, etc.

## ORDERING CODE



## SHAPES

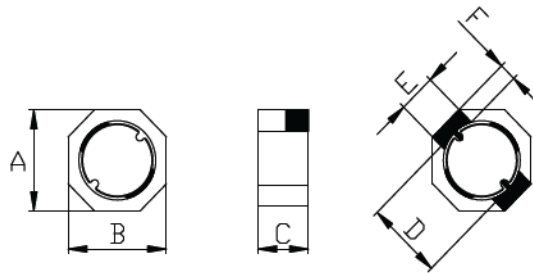


Fig. 1

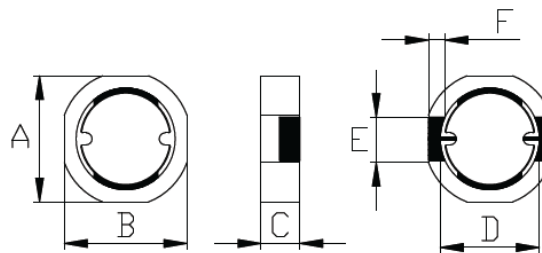


Fig. 2

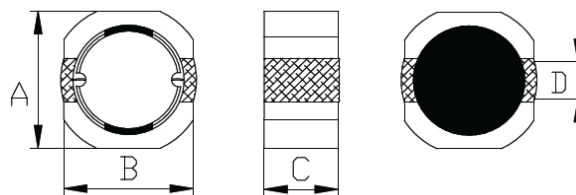


Fig. 3

CORE MASTER ENTERPRISE CO., LTD.

<http://www.coremaster.com.tw>



## SHIELDED SMD POWER INDUCTORS / SSR TYPE

**DIMENSIONS (UNIT: mm)**

Part No.	Fig.	A (MAX)	B (MAX)	C (MAX)	D (REF)	E (REF)	F (REF)
SSR0520	1	5.3	5.3	2.2	4.1	1.75	0.66
SSR0530	1	5.3	5.3	3.0	4.1	1.75	0.66
SSR0625	3	6.3	6.3	2.5	2.0	-	-
SSR0630	2	6.8	6.1	3.0	4.8	2.50	0.60
SSR0635	2	6.8	6.1	3.5	4.8	2.50	0.60
SSR0716	2	8.0	7.6	1.6	5.9	2.50	0.70
SSR0720	2	8.0	7.6	2.0	5.9	2.50	0.70
SSR0725	3	8.0	8.0	2.5	2.5	-	-
SSR0730	3	8.0	8.0	3.0	2.5	-	-
SSR0740	3	8.0	8.0	4.0	2.5	-	-

### ELECTRICAL CHARACTERISTICS FOR SSR0520

Part No.	Inductance (uH)	Test Frequency	RDC (mΩ)	IDC (A)
SSR0520-1R1 □	1.1	100KHZ	44	2.15
SSR0520-2R2 □	2.2	100KHZ	59	1.63
SSR0520-2R7 □	2.7	100KHZ	73	1.34
SSR0520-3R6 □	3.6	100KHZ	76	1.30
SSR0520-4R7 □	4.7	100KHZ	87	1.14
SSR0520-6R8 □	6.8	100KHZ	105	0.95
SSR0520-100 □	10	100KHZ	150	0.76
SSR0520-150 □	15	100KHZ	230	0.63
SSR0520-220 □	22	100KHZ	320	0.56
SSR0520-330 □	33	100KHZ	455	0.44
SSR0520-470 □	47	100KHZ	730	0.36
SSR0520-680 □	68	100KHZ	1130	0.30
SSR0520-101 □	100	100KHZ	1650	0.23

### ELECTRICAL CHARACTERISTICS FOR SSR0530

Part No.	Inductance (uH)	Test Frequency	RDC (mΩ)	IDC (A)
SSR0530-1R1 □	1.1	100KHZ	21	3.67
SSR0530-1R5 □	1.5	100KHZ	32	2.92
SSR0530-2R0 □	2.0	100KHZ	35	2.52
SSR0530-2R2 □	2.2	100KHZ	38	2.41
SSR0530-3R3 □	3.3	100KHZ	51	2.24
SSR0530-4R7 □	4.7	100KHZ	60	1.87
SSR0530-6R8 □	6.8	100KHZ	76	1.51

**CORE MASTER ENTERPRISE CO., LTD.**



<http://www.coremaster.com.tw>

## SHIELDED SMD POWER INDUCTORS / SSR TYPE

### ELECTRICAL CHARACTERISTICS FOR SSR0530

Part No.	Inductance (uH)	Test Frequency	RDC (mΩ)	IDC (A)
SSR0530-100 □	10	100KHZ	105	1.33
SSR0530-150 □	15	100KHZ	149	1.05
SSR0530-220 □	22	100KHZ	218	0.86
SSR0530-330 □	33	100KHZ	315	0.72
SSR0530-470 □	47	100KHZ	455	0.62
SSR0530-680 □	68	100KHZ	585	0.51
SSR0530-101 □	100	100KHZ	950	0.43
SSR0530-151 □	150	100KHZ	1340	0.21

### ELECTRICAL CHARACTERISTICS FOR SSR0625

Part No.	Inductance (uH)	Test Frequency	RDC (mΩ)	IDC (A)
SSR0625-1R0 □	1.0	100KHZ	16	3.48
SSR0625-1R5 □	1.5	100KHZ	18	2.83
SSR0625-2R0 □	2.0	100KHZ	23	2.64
SSR0625-2R2 □	2.2	100KHZ	27	2.50
SSR0625-3R3 □	3.3	100KHZ	30	1.89
SSR0625-4R3 □	4.3	100KHZ	42	1.65
SSR0625-4R7 □	4.7	100KHZ	45	1.60
SSR0625-6R2 □	6.2	100KHZ	69	1.37
SSR0625-6R8 □	6.8	100KHZ	78	1.20
SSR0625-100 □	10	100KHZ	96	1.07
SSR0625-120 □	12	100KHZ	112	0.97
SSR0625-150 □	15	100KHZ	144	0.87
SSR0625-180 □	18	100KHZ	175	0.79
SSR0625-220 □	22	100KHZ	245	0.71
SSR0625-270 □	27	100KHZ	275	0.64
SSR0625-330 □	33	100KHZ	317	0.58
SSR0625-390 □	39	100KHZ	397	0.53
SSR0625-470 □	47	100KHZ	507	0.48
SSR0625-560 □	56	100KHZ	561	0.44
SSR0625-680 □	68	100KHZ	764	0.40
SSR0625-820 □	82	100KHZ	870	0.36
SSR0625-101 □	100	100KHZ	1056	0.33

CORE MASTER ENTERPRISE CO., LTD.



<http://www.coremaster.com.tw>

## SHIELDED SMD POWER INDUCTORS / SSR TYPE

### ELECTRICAL CHARACTERISTICS FOR SSR0630

Part No.	Inductance (uH)	Test Frequency	RDC (mΩ)	IDC (A)
SSR0630-1R0 □	1.0	100KHZ	14.7	3.59
SSR0630-1R5 □	1.5	100KHZ	16.8	2.93
SSR0630-2R2 □	2.2	100KHZ	21.0	2.42
SSR0630-3R6 □	3.6	100KHZ	27.3	1.89
SSR0630-4R7 □	4.7	100KHZ	35.7	1.66
SSR0630-6R2 □	6.2	100KHZ	42.0	1.45
SSR0630-100 □	10	100KHZ	64.5	1.14
SSR0630-120 □	12	100KHZ	68.5	1.04
SSR0630-150 □	15	100KHZ	81.9	0.93
SSR0630-180 □	18	100KHZ	97.8	0.85
SSR0630-220 □	22	100KHZ	125.0	0.77
SSR0630-270 □	27	100KHZ	158.0	0.70
SSR0630-330 □	33	100KHZ	184.0	0.63
SSR0630-390 □	39	100KHZ	197.4	0.58
SSR0630-470 □	47	100KHZ	243.0	0.53
SSR0630-560 □	56	100KHZ	288.0	0.48
SSR0630-680 □	68	100KHZ	355.0	0.44
SSR0630-820 □	82	100KHZ	434.0	0.40
SSR0630-101 □	100	100KHZ	545.0	0.36
SSR0630-151 □	151	100KHZ	808.0	0.31

### ELECTRICAL CHARACTERISTICS FOR SSR0635

Part No.	Inductance (uH)	Test Frequency	RDC (mΩ)	IDC (A)
SSR0635-2R0 □	2.0	100KHZ	21.0	3.00
SSR0635-2R7 □	2.7	100KHZ	24.5	2.69
SSR0635-3R3 □	3.3	100KHZ	28.5	2.57
SSR0635-4R7 □	4.7	100KHZ	34.8	2.08
SSR0635-6R2 □	6.2	100KHZ	37.8	1.84
SSR0635-8R2 □	8.2	100KHZ	47.5	1.54
SSR0635-100 □	10	100KHZ	54.6	1.49
SSR0635-120 □	12	100KHZ	68.5	1.28
SSR0635-150 □	15	100KHZ	84.0	1.10
SSR0635-180 □	18	100KHZ	89.5	1.05
SSR0635-220 □	22	100KHZ	117	0.97
SSR0635-270 □	27	100KHZ	153	0.82
SSR0635-330 □	33	100KHZ	177	0.76
SSR0635-390 □	39	100KHZ	209	0.70

CORE MASTER ENTERPRISE CO., LTD.



<http://www.coremaster.com.tw>

## SHIELDED SMD POWER INDUCTORS / SSR TYPE

### ELECTRICAL CHARACTERISTICS FOR SSR0635

Part No.	Inductance (uH)	Test Frequency	RDC (mΩ)	IDC (A)
SSR0635-470 □	47	100KHZ	229	0.68
SSR0635-560 □	56	100KHZ	282	0.60
SSR0635-680 □	68	100KHZ	350	0.56
SSR0635-820 □	82	100KHZ	458	0.47
SSR0635-101 □	100	100KHZ	520	0.45
SSR0635-151 □	151	100KHZ	726	0.37

### ELECTRICAL CHARACTERISTICS FOR SSR0716

Part No.	Inductance (uH)	Test Frequency	RDC (mΩ)	IDC (A)
SSR0716-4R7 □	4.7	100KHZ	57.2	2.4
SSR0716-6R8 □	6.8	100KHZ	76.7	2.1

### ELECTRICAL CHARACTERISTICS FOR SSR0720

Part No.	Inductance (uH)	Test Frequency	RDC (mΩ)	IDC (A)
SSR0720-4R7 □	4.7	100KHZ	54	3.3
SSR0720-6R8 □	6.8	100KHZ	80	2.8
SSR0720-100 □	10	100KHZ	121	2.6
SSR0720-150 □	15	100KHZ	156	2.0

### ELECTRICAL CHARACTERISTICS FOR SSR0725

Part No.	Inductance (uH)	Test Frequency	RDC (mΩ)	IDC (A)
SSR0725-4R7 □	4.7	100KHZ	59	4.0
SSR0725-6R8 □	6.8	100KHZ	68	3.5
SSR0725-100 □	10	100KHZ	100	2.8
SSR0725-150 □	15	100KHZ	165	2.4
SSR0725-220 □	22	100KHZ	247	2.0

### ELECTRICAL CHARACTERISTICS FOR SSR0730

Part No.	Inductance (uH)	Test Frequency	RDC (mΩ)	IDC (A)
SSR0730-2R2 □	2.2	100KHZ	25	5.5
SSR0730-3R3 □	3.3	100KHZ	30	4.8
SSR0730-4R7 □	4.7	100KHZ	39	4.3
SSR0730-100 □	10	100KHZ	91	2.9

## SHIELDED SMD POWER INDUCTORS / SSR TYPE

### ELECTRICAL CHARACTERISTICS FOR SSR0740

Part No.	Inductance (uH)	Test Frequency	RDC (mΩ)	IDC (A)
SSR0740-1R0 □	1.0	100KHZ	7	7.3
SSR0740-1R5 □	1.5	100KHZ	10	7.2
SSR0740-4R7 □	4.7	100KHZ	24	4.6
SSR0740-150 □	15	100KHZ	62	2.5
SSR0740-220 □	22	100KHZ	76	2.2